

*Helleborus*

The Lambert sCMOS offers a simple, affordable and efficient imaging solution for scientific research, R&D, machine vision and other industrial applications. With its sCMOS image sensor, this camera produces excellent images in low-light conditions and situations that require a high dynamic range.

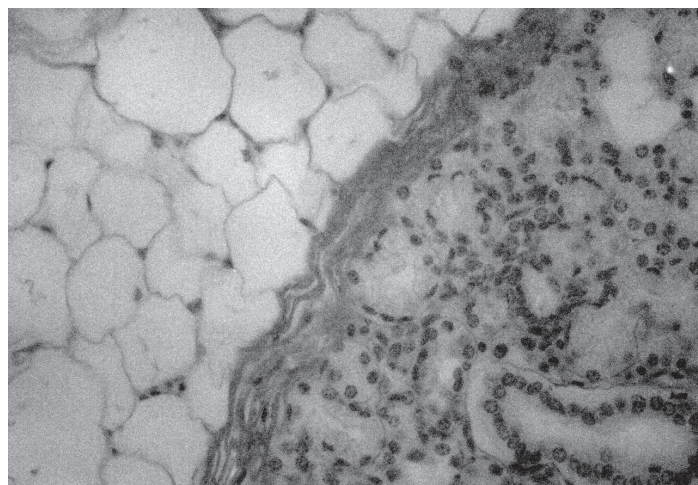
Automatic gain control (AGC), automatic exposure control (AEC) and non-uniformity correction (NUC) optimize image quality to match the light conditions.

With the Lambert sCMOS software, it's easy to record and analyze images. These images can also be viewed in the popular image processing platform ImageJ/FIJI.

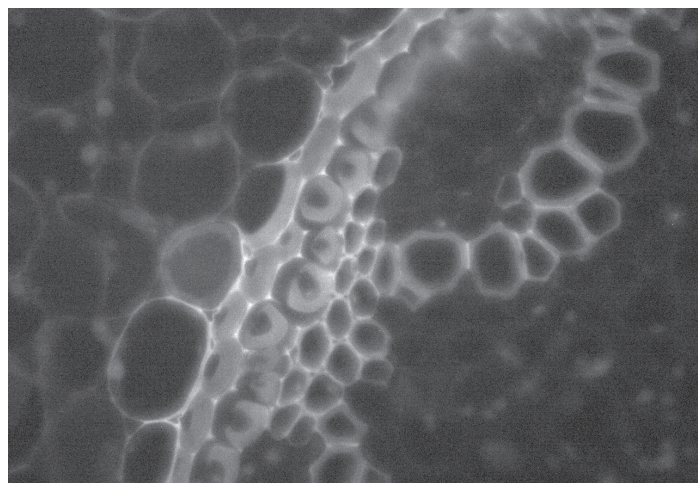
## Applications

- Biomedical imaging
- Scientific research
- Machine vision
- Industrial imaging
- Low-light imaging
- Microfluidics
- Spinning-disk confocal microscopy
- Light sheet microscopy

Specifications are subject to change without prior notice.



*Fat tissue*

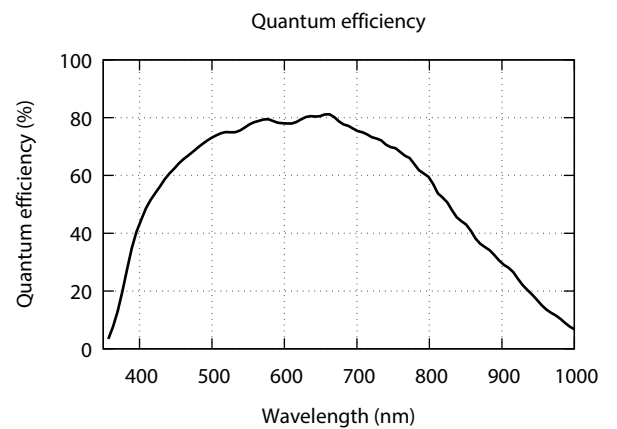


*Convallaria*



## Specifications

|                           |                                       |
|---------------------------|---------------------------------------|
| Camera resolution         | 1280 x 1024 pixels                    |
| Sensor pixel size         | 9.7 $\mu\text{m}$ x 9.7 $\mu\text{m}$ |
| Sensor full-well capacity | > 25000 e-                            |
| Sensor dynamic range      | > 60 dB                               |
| Frame rate                | Up to 100 fps at full resolution      |
| Sensor shutter mode       | Rolling shutter                       |
| Read noise                | < 4 e- med.                           |
| Lens mount                | CS                                    |
| Interface                 | 10/8 bit Base CameraLink compatible   |
| Operating temperature     | -40°C to +60°C                        |
| Storage temperature       | -50°C to +80°C                        |



Specifications are subject to change without prior notice.