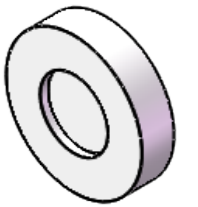


**FOR INFORMATION ONLY  
NOT FOR MANUFACTURING PURPOSES**



1. UNMOUNTED DIAMETER: 12.7
2. DESIGN WAVELENGTH: 3500 nm
3. RETARDATION:  $\lambda/2$
4. RETARDATION TOLERANCE:  $<\lambda/100$
5. WAVEFRONT DISTORTION:  $<\lambda/4@633\text{nm}$
6. SURFACE QUALITY: 40/20
7. CLEAR APERTURE:  $>11.5\text{mm}$
8. PARALLELISM:  $<5$  arcsec
9. COATING:  $R<0.5\%$  @3500nm

<b>SIMTRUM</b> www.simtrum.com	
Title:	Single Plate Middle Infrared Zero Order Half Waveplate
Material:	MgF2
Part No:	MgF2-MIRHWP-12.7-3500-M