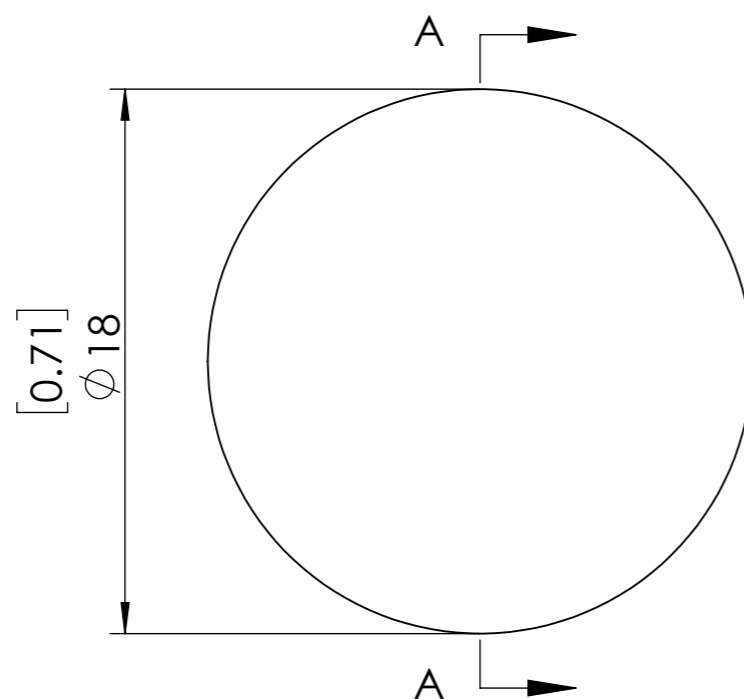


**FOR INFORMATION ONLY  
NOT FOR MANUFACTURING PURPOSES**



[0.00]  
~~0.04~~

SECTION A-A

1. UNMOUNTED DIAMETER: 18 mm
2. DESIGN WAVELENGTH: 532 nm
3. RETARDATION:  $\lambda/4$
4. RETARDATION TOLERANCE:  $<\lambda/300$
5. WAVEFRONT DISTORTION:  $<\lambda/8@633\text{nm}$
6. SURFACE QUALITY: 20/10
7. CLEAR APERTURE: 18mm
8. PARALLELISM:  $<1$  arcsec
9. COATING:  $R<0.25\%@532\text{nm}$

|                                   |   |
|-----------------------------------|---|
| <b>SIMTRUM</b><br>www.simtrum.com |   |
| Title:                            | Single Plate High Power Quarter Waveplate |
| Material:                         | Quartz                                    |
| Part No:                          | Q-SHPQWP-18-532                           |