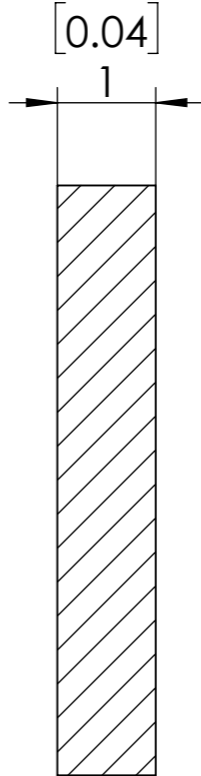
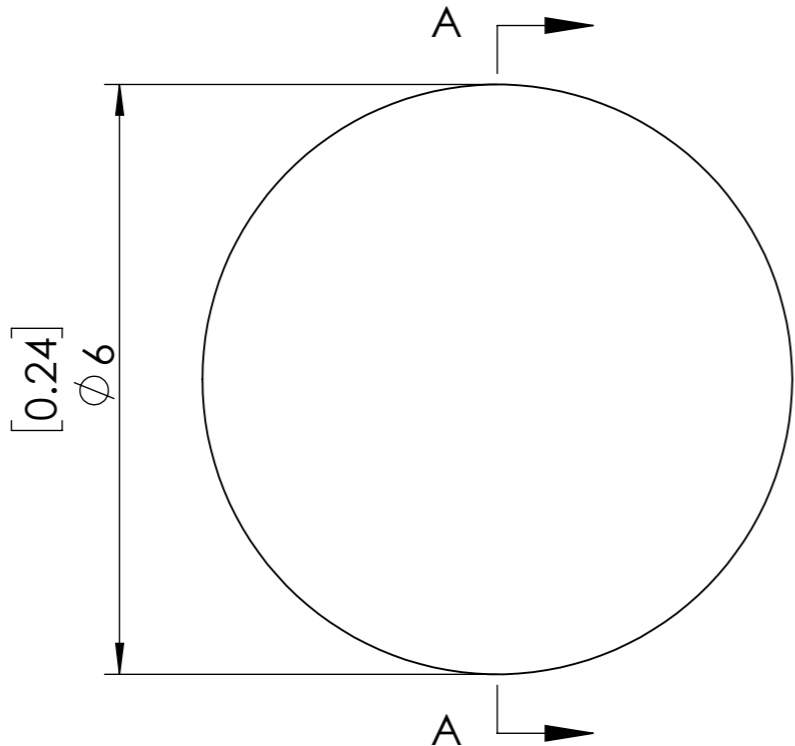
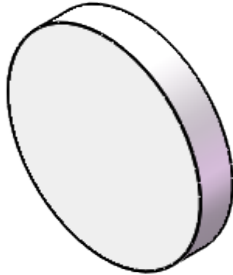


**FOR INFORMATION ONLY
NOT FOR MANUFACTURING PURPOSES**



SECTION A-A

- 1. DESIGN WAVELENGTH: 830 nm
- 2. RETARDATION: $\lambda/4$
- 3. RETARDATION TOLERANCE: $\lambda/100$
- 4. CLEAR APERTURE: >90%
- 5. SURFACE QUALITY: 60-40
- 6. PARALLELISM: <3 arcmin

SIMTRUM www.simtrum.com	
Title:	Quartz Multi-Order Quarter Waveplate
Material:	Crystalline Quartz
Part No:	MQWP-25.4-830